



PEACHTREE CORNERS

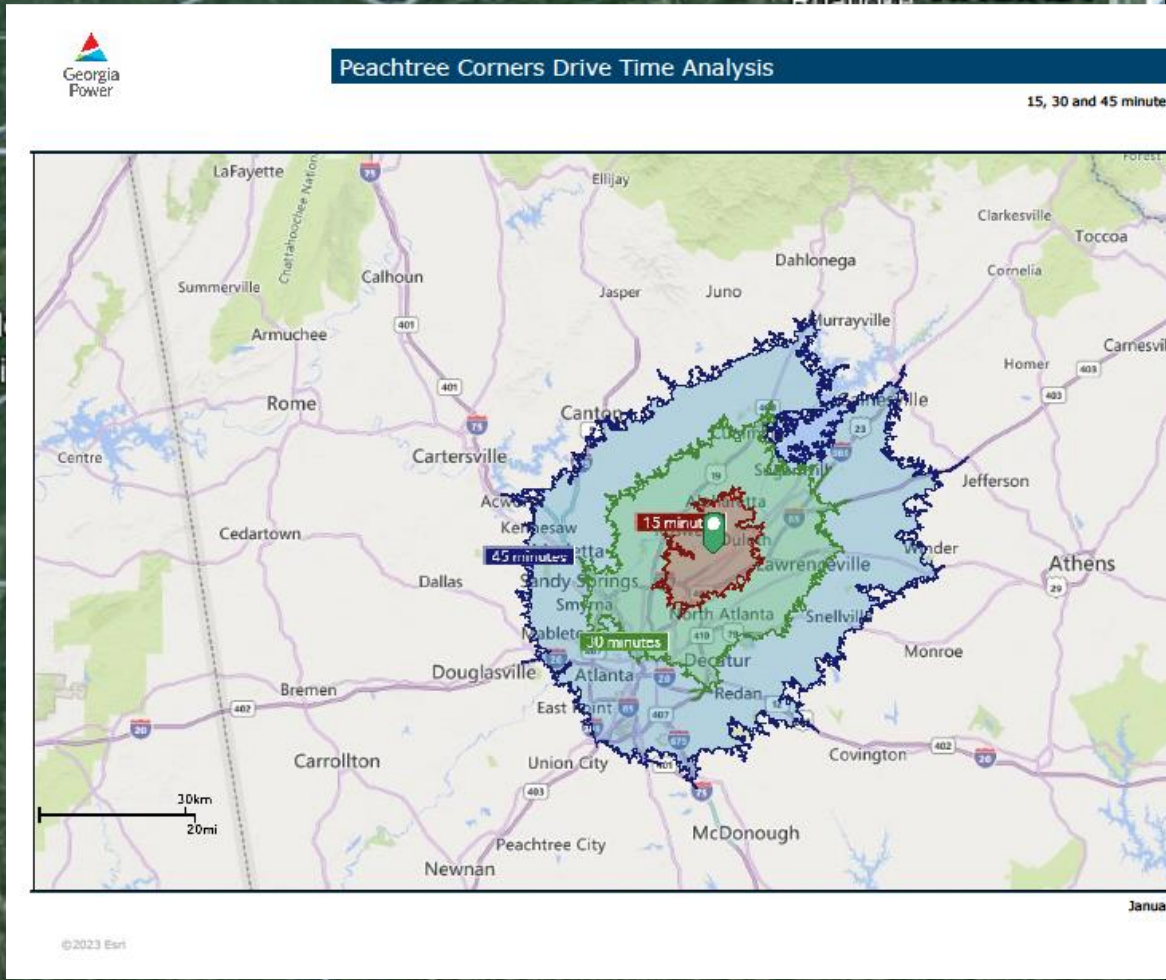
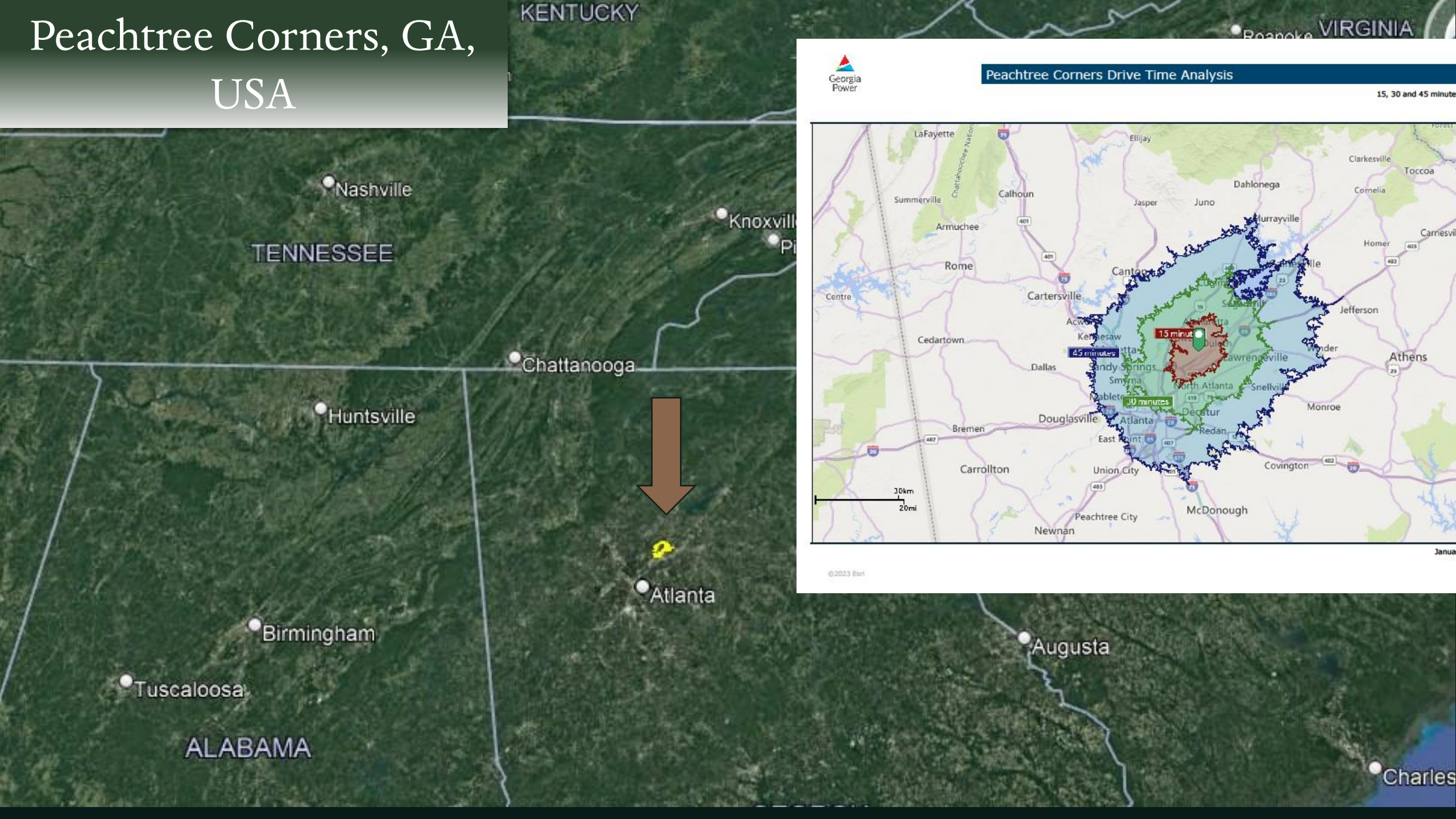
**43,500 residents &
35,000 jobs**

**Part of the metro Atlanta
population of approximately
6 million people**

**Largest city in
Gwinnett County
by capita**

Incorporated 2012

Peachtree Corners, GA, USA



Discussion

Projects

Major Employers

Business Resources

Natural Resources





Town Center

Opened in 2019

\$100 million

21-acre development, 2-acre Town Green

12 restaurant / dessert shops

74 townhomes

18,000 square feet of retail space

Livable Centers Initiative (LCI)





100 free events in 2023

12 concerts

Fitness/Movies/Festival

Cornhole/Bark in the
Park

Town Green

Town Green



Corners Connector Trail System

TECH PARK LAKE



BOTANICAL GARDEN, TOWN CENTER







The Forum

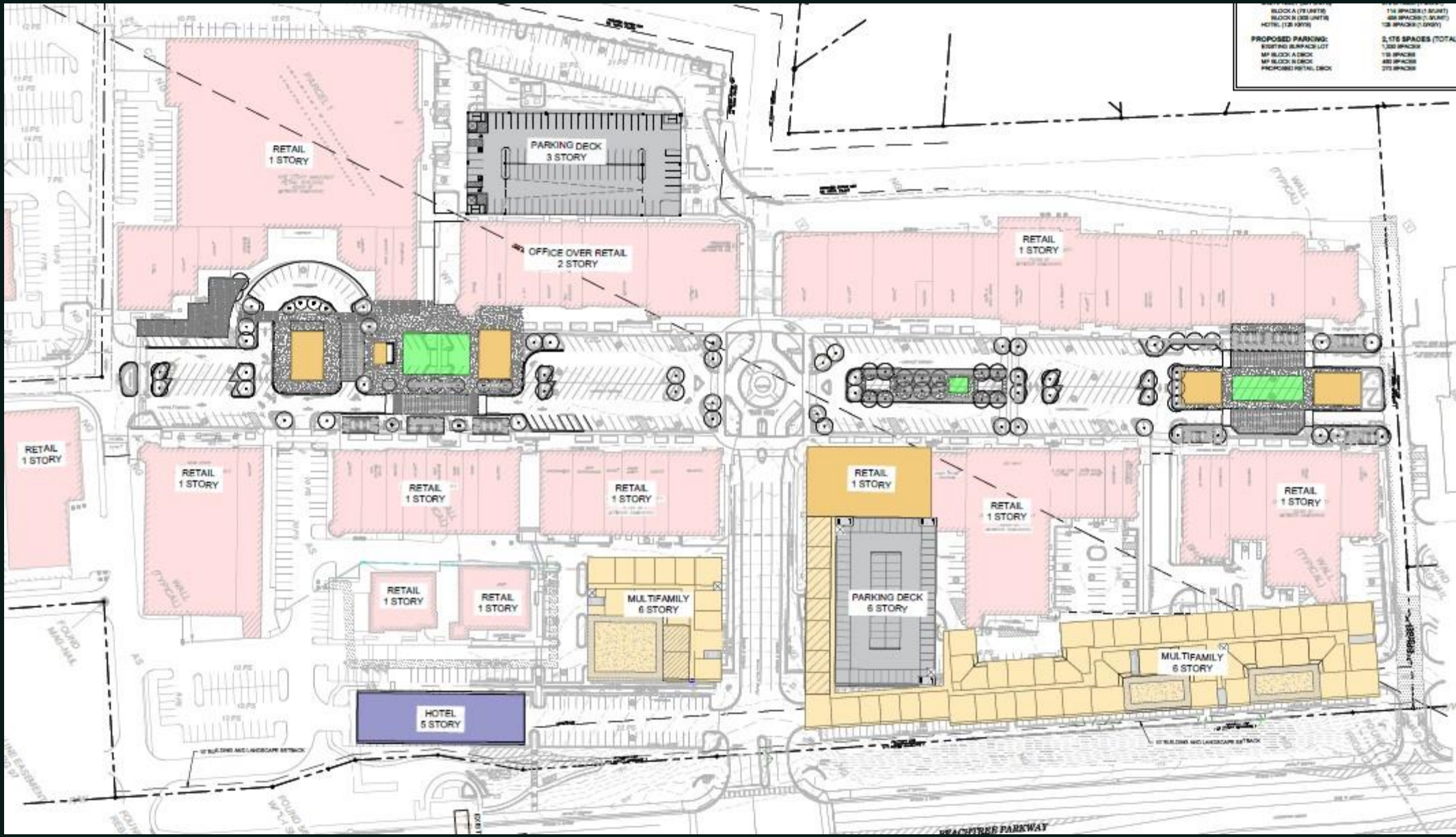
North American
Properties Redevelopment

North American Properties



FORUM
REDEVELOPMENT







WRAP

bek

Major Employers



PEACHTREE
CORNERS

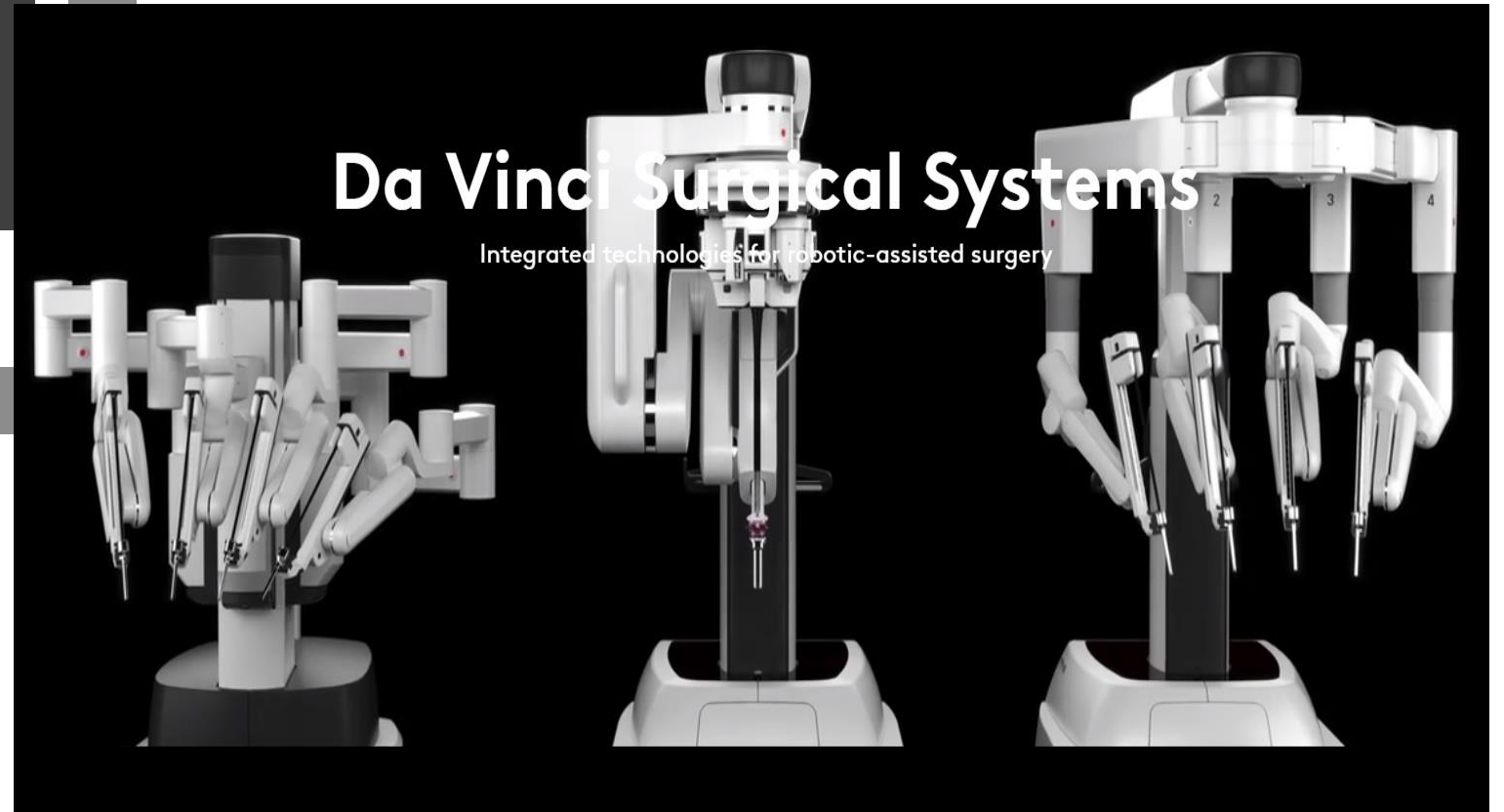
• Soliant Health	565
• Siemens Industry	534
• Crawford & Company	488
• Molnlycke Health Care	444
• Fleetcor	350
• Capstone Logistics	331
• Pond & Co.	325
• Virtucom	318
• Intuitive	213
• Insight Sourcing Group	197
• ACI Worldwide	180
• Brightree	179
• Sidel Inc	164
• Honeywell	157
• Business Software, Inc.	136
• Dematic Corp.	121
• Plaid Enterprises Inc	112
• Softchoice Corp.	100

A few recent
amazing gains
for the city



5655 Spalding Drive
3770 Data Drive
3790 Data Drive
3795 Data Drive
5430 Metric Place

INTUITIVE



Business Resources

SOUTHWEST GWINNETT CHAMBER

Beth Coffey
Executive Director
Southwest Gwinnett
Chamber

bcoffey@southwestgwinnettchamber.org

470-482-1899

PEACHTREE CORNERS BUSINESS ASSOCIATION

Lisa Proctor
President

lisa.proctor@sanfordrose.com

678-969-3356

GWINNETT COUNTY CHAMBER OF COMMERCE

Nick Masino
President and CEO
Gwinnett Chamber &
Partnership Gwinnett

Nick@gwinnettchamber.org

404-667-6425

Quiz

What are 3 of the city's largest employers?

What year did the city incorporate?





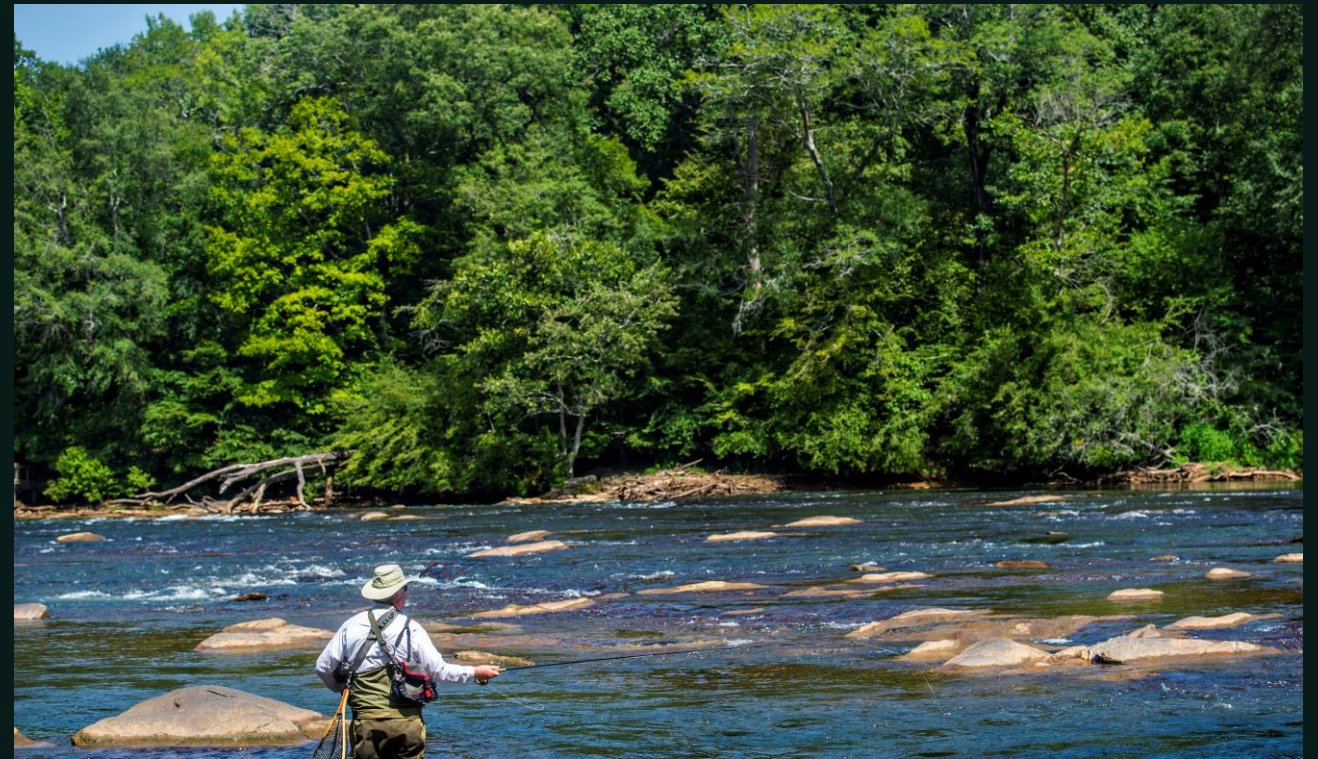
Water supply Lake Lanier

- Buford Dam
- 38,000 acres
- U.S. Army Corps of Engineers
- Regulate flood control
- Created 1956
- 8 million visitors / year





Chattahoochee River
“Painted Rocks”
(Creek Indigenous people)
430 miles long
Empties into Apalachicola Bay in the
Gulf of Mexico



Thank you!

Jennifer Howard

jhoward@peachtreecornersga.gov

<https://peachtreecornersga.gov/267/>

Economic-Development





Curiosity Lab

at Peachtree Corners

WHO ARE WE?



City Street of the Future
State-of-the-art smart city infrastructure



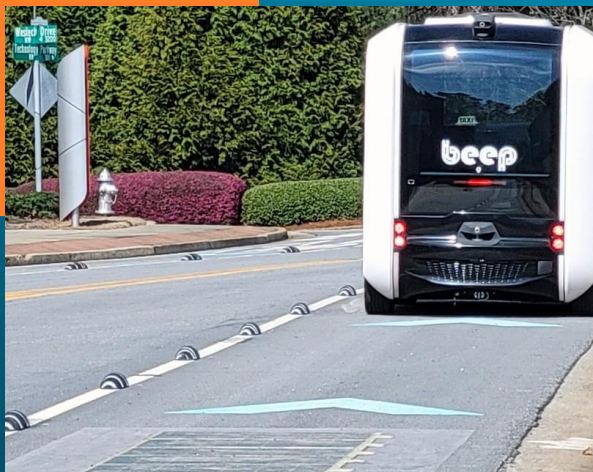
3-Mile Public Autonomous Test Track
(4.82 kilometers)



Mobility Test Platform
Connected Infrastructure / V2X Test Platform

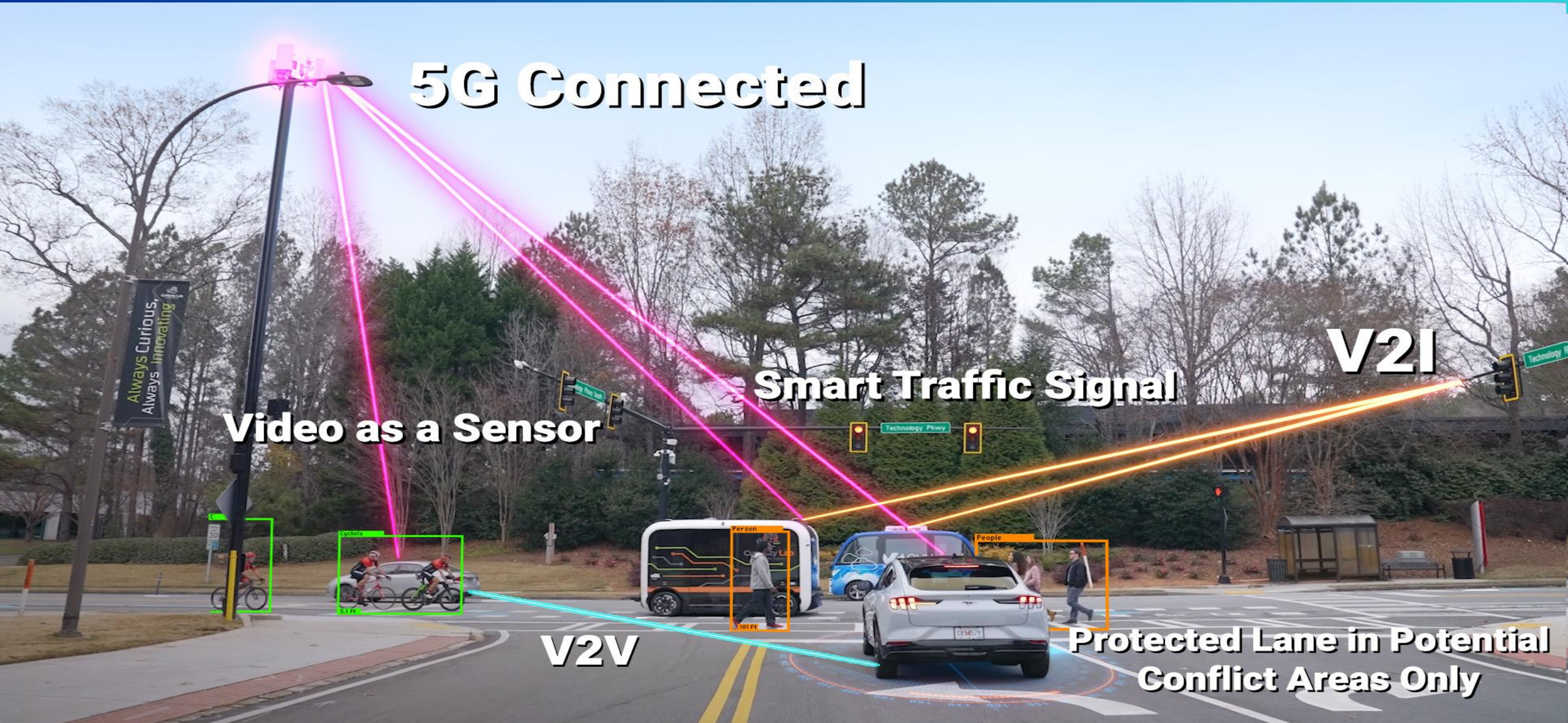


Innovation Center
25,000 square feet of space that is home of some of the most innovative companies



A Model for the "City Street of the Future"

The nation's FIRST smart city powered by real world infrastructure + next generation connectivity



5G Connected

Smart Traffic Signal

V2I

Video as a Sensor

V2V

Protected Lane in Potential Conflict Areas Only

Always Curious,
Always Innovating

Cyclists

Person

People

AUTONOMOUS/ADVANCED VEHICLE TEST TRACK

Integrated public roadway

- Mature tree canopy
- 13% grade change

Sweeping curves

- Multi-story commercial and residential buildings



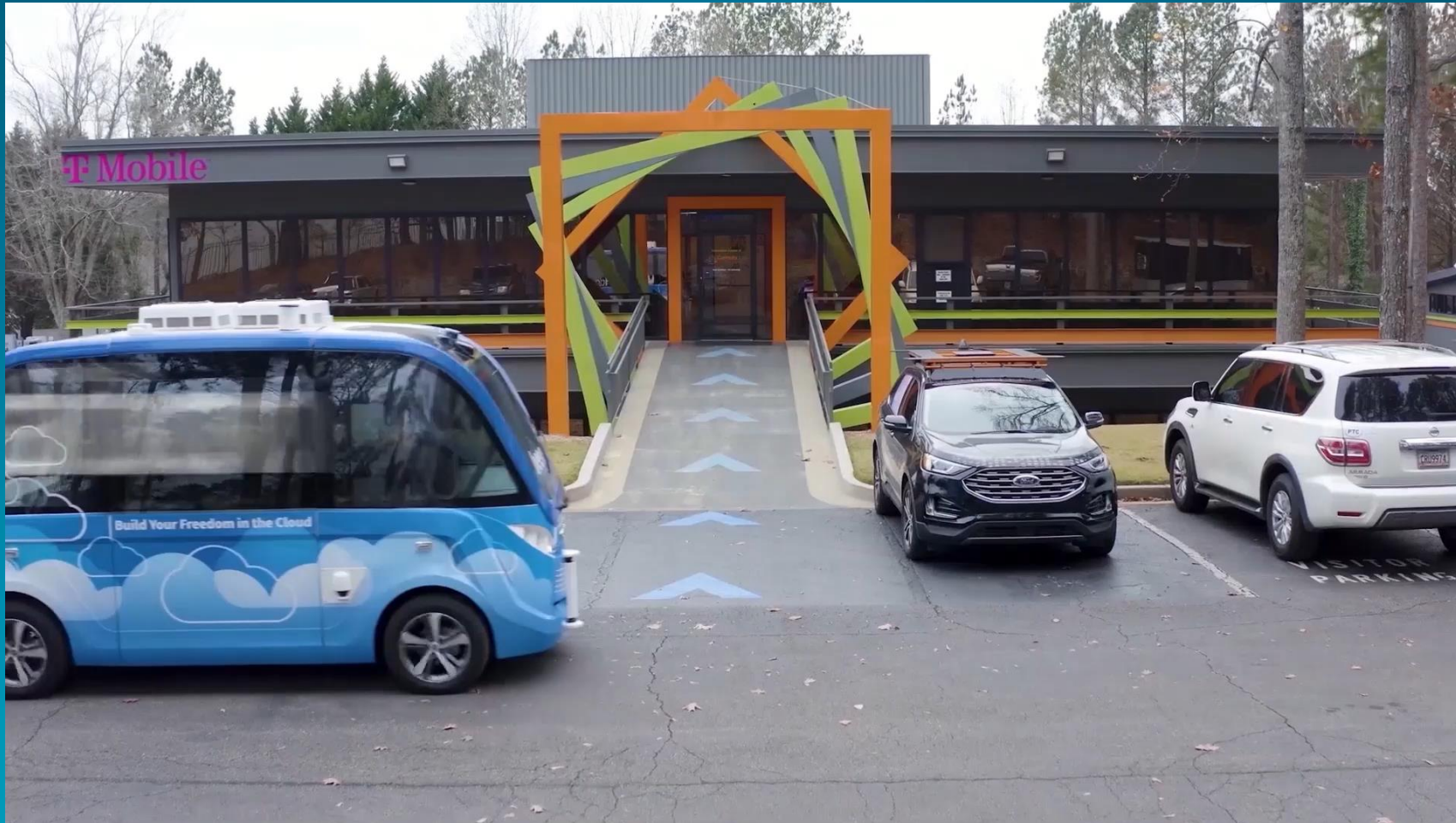
MOBILITY TEST VEHICLE.

Open-source platform with historical data for collection unlike anywhere else in the nation



ALWAYS ADVANCING.

Innovation Center



- Technology Incubator for growing & scaling early-stage startups
- Corporate Innovation Space
- 25,000 square feet of flexible space

UNLIKE ANY OTHER SMART CITY ENVIRONMENT ON EARTH.

- Live 5G wireless environment
- City government owns all infrastructure: quick approvals and decisions
- No charge for the use of the ecosystem / infrastructure
- No intellectual property rights required
- Respect and guarantee of security for proprietary data
- Highest level of data security protection for unclassified data



PARTNERS

T Mobile



BOSCH

beep

TRAFFICCAST



SkyMul

iteris

iPgallery
Urban Mobility



BlueTOAD
Spectra
RSU



Cynamics

clearwave fiber

AUVSI

Cyber 2.0

TAG
Technology Association
of Georgia

Your virtual guard
adamo

Georgia
Power



GAMA
Georgia Automotive
Manufacturers Association

Intelliterra

OUSTER



i-charging

Sanguina

ROADSENSE
SMART ROAD INFRASTRUCTURE

Georgia
Tech Research
Institute

ISRAEL
LIVING LAB
Smart Mobility

PAUL DUKE
STEM
HIGH SCHOOL

OVHcloud

ZONOS
DECODING CROSS-BORDER

INTERNATIONAL PARTNERSHIPS & COLLABORATIONS





Curiosity Lab

at Peachtree Corners